

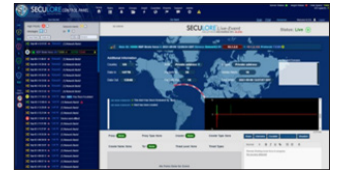


Managed Cybersecurity Monitoring for Public Safety

Built by Experts in Public Safety
Technology and Cybersecurity

The SecuLore OverWatch solution simplifies cybersecurity monitoring for public safety agencies and local governments by empowering IT teams with the expert resources needed to defend and protect our nation's critical infrastructure.

CUSTOMIZABLE
TO FIT YOUR
ORGANIZATION'S
SPECIFIC NEEDS



Round the Clock Cybersecurity Monitoring 24x7x365

Public Safety-Focused Expertise

SecuLore's OverWatch offers the next level of behavior-based cybersecurity, customized specifically for public safety and designed to identify threats often missed by other layers of security.

- U.S. designed and manufactured.
- U.S. based Security Operations Center (SOC) team.

FACT SHEET

Continuous Network Monitoring Customized for Your Specific Network Environment

Through an initial consultation, SecuLore gains baseline information on your network architecture and cybersecurity goals, allowing for optimal visibility and data capture of traffic traversing across your network.

Passive Data Capture

Paladin, SecuLore's proprietary patented network device captures raw packet data at layer two for in-depth forensic analysis.

Extensive Hands-On Public Safety Experience

Utilizing our extensive experience identifying cyber attacks across the country, SecuLore's behavior-based methodologies are continually updated to stay a step ahead of cyber threats.

Supports NIST Recommendation for Independent Continuous Network Monitoring

NIST 800-53, Rev. 5.1 CA-7 (1)

Patented Technology

SecuLore's patented Paladin is at the heart of our OverWatch solution. It is easy to install, agentless, and integrates seamlessly with your existing security and network infrastructure.

Continuous Cybersecurity Monitoring for Public Safety Networks

Experienced in public safety-targeted cyber attacks, SecuLore's team of expert analysts rapidly identify activity that may be an indication of malicious behaviors present in your network. It offers immediate alerts for high-severity, suspicious activity, as well as actionable remediation recommendations to help keep your organization cyber safe.

SecuLore is the Leading Innovator in Public Safety-Focused Cybersecurity.

OverWatch Benefits

- Dedicated cyber analysts that know your network
- Cybersecurity monitoring and threat analysis 24x7x365
- Cybersecurity network activity reports
- Direct contact for critical vulnerabilities
- Support is included; no maintenance or replacement fees
- Incident response
- Remote network traffic visualization and access to your network 24x7x365
- Capture and save suspicious data
- SecuLore Paladin locally stores data that can be accessed for in-depth forensic analysis with one click
- Quick, easy and agentless setup of SecuLore Paladin device

Enhance Your IT Resources

- Verify firewall configuration
- Validate security protocols
- Verify vendor network traffic
- Validate compliance policy requirements
- Identify external and lateral traffic
- Validate that closed networks are truly closed

The Mission Critical Alliance is a partner program for best-of-breed technology solution providers to openly collaborate to advance the capabilities, compatibility and security of mission critical solutions.



info@seculore.com
seculore.com



MCA@L3Harris.com
L3Harris.com