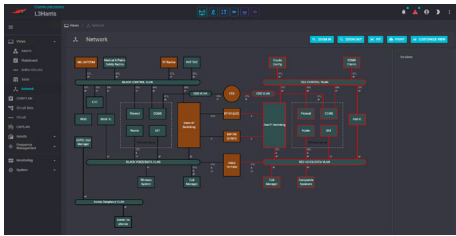


# MANTAWARE™

## Unified Platform Automation Suite for Naval Communications Control and Cyber Security

MantaWARE is an integrated suite of applications for enhancing communication, operational efficiency and security. It includes tools for managing naval communications, electronic warfare, cyber defense, and network monitoring, ensuring robust, adaptable, and secure operations across various maritime platforms and challenging environments.

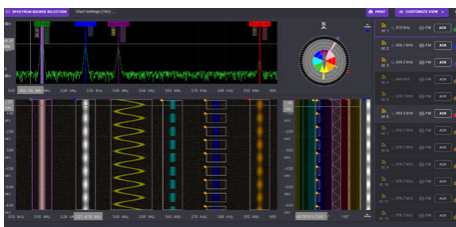
### COMMUNICATIONS CONTROL MANAGEMENT SYSTEM (CCMS)



CCMS is a sophisticated maritime communication management tool designed to streamline and secure complex communication operations on military ships. It emphasizes advanced communication planning, enforcement, and adaptability, with real-time monitoring, seamless system integration, and customizable user interfaces to enhance communication efficiency and security in demanding naval environments.

- > Advanced communication planning and enforcement
- > Comprehensive communication system management
- > Real-time communication monitoring
- > Communication-focused user interface
- > Enhanced communication system integration

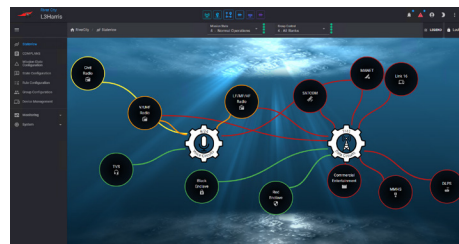
### SPECTRUM MANAGER



Spectrum Manager is a strategic solution for the navy, enhancing communication in complex electromagnetic environments. It integrates Electronic Warfare (EW) data with communications systems, offering improved situational awareness, effective interference management, and enhanced interoperability, thus ensuring reliable and secure maritime communications amid advanced electronic warfare challenges.

- > EW integration
- > Interference management
- > Enhanced situational awareness
- > Bidirectional CCMS integration
- > Enhances interoperability

### RIVER CITY MANAGER

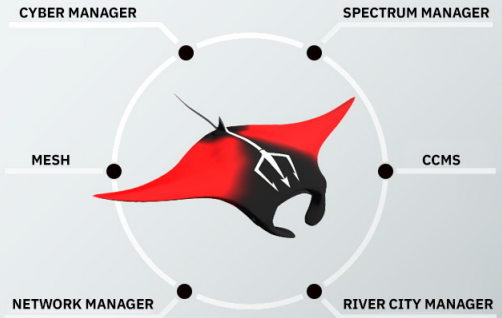


River City Manager is a critical tool for naval shipboard operations, particularly when heightened operational security measures are required. It establishes and administers bandwidth restrictions, essential for efficiently managing and optimizing access to RF bearers. This capability is especially crucial during high-security events, ensuring secure and effective communication in demanding naval environments.

- > Real-time communication adjustment
- > Centralized control and management



## MantaWARE



### THE MANTAWARE SUITE

- > **CCMS**  
Next-generation maritime communications management
- > **Mesh**  
Effective naval communications and coordination tools
- > **Network Manager**  
Comprehensive network monitoring solution
- > **Spectrum Manager**  
Communicating in a dynamic electromagnetic spectrum
- > **River City Manager**  
Top mission state management for operational security
- > **Cyber Manager**  
Integrated Cyber Defense System (ICDS) solution

- > Enhanced tactical communication
- > Data and voice service restrictions
- > Adaptive security postures

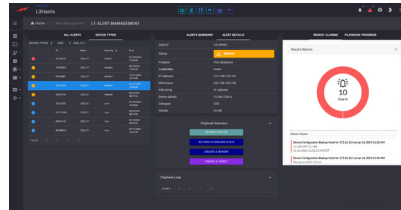
## CYBER MANAGER



Cyber Manager is a sophisticated ICDS designed for military use. It orchestrates and automates responses to complex threats, enhancing security across multi-classified domains. The system offers flexible deployment, streamlined log management, secure collaboration tools, and robust integration with military-grade security platforms, significantly bolstering incident response and operational efficiency.

- > Automated threat response
- > Comprehensive data security and compliance
- > Multi-domain network deployment
- > Flexible deployment options
- > Robust integration with military-grade security tools

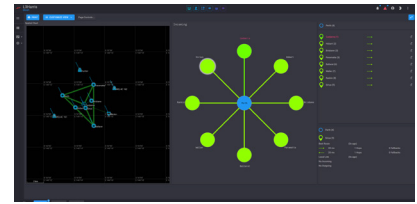
## NETWORK MANAGER



Network Manager is a comprehensive network monitoring tool providing in-depth insights into IP-connected devices, effective bandwidth management and robust server performance tracking. It includes Wi-Fi and WAN monitoring, storage system integration, and enhanced fault and switch port management. Optimized for distributed network environments, it ensures maximum network performance, compliance, and uptime across varied and complex network infrastructures.

- > Distributed network monitoring
- > Network configuration management
- > Real-time switch port mapping
- > Wide Area Network connection management
- > Comprehensive IP device monitoring

## MESH



Mesh revolutionizes naval communications by integrating disparate systems across vessels and platforms. It overcomes siloed operations, enhancing efficiency and reliability through direct system coordination, CCMS integration and a self-healing mesh network. The solution ensures seamless communication, even in degraded states, by optimizing configuration and network visualization.

- > Operational visualization
- > Platform networking
- > Circuit correlation
- > Self-healing mesh network
- > CCMS integration

## MantaWARE

© 2024 L3Harris Technologies, Inc. | 1/2024

L3Harris Technologies is the Trusted Disruptor in the defense industry. With customers' mission-critical needs always in mind, our 50,000 employees deliver end-to-end technology solutions connecting the space, air, land, sea and cyber domains in the interest of national security.

The information contained within this product data sheet is not subject to export controls and may be released without export restrictions. The equipment described herein may require Canadian and/or U.S. Government authorization for export purposes. Diversion contrary to Canadian and/or U.S. law is prohibited.



L3Harris MAPPS Inc.  
8565 Côte-de-Liesse  
Montréal, Québec, Canada  
H4T 1G5  
t +1 514 787 5000 | f +1 514 788 1530  
mantaware@L3Harris.com