

## FLITESCENE<sup>®</sup>

### Full-capability digital moving map

L3Harris' FliteScene digital map is a high-performance, combat-proven, feature-rich, digital moving map software product that provides advanced situational awareness for the most demanding conditions faced by both military and civilian flight crews. It is designed to operate in general-purpose, reconfigurable graphics hardware and be hosted on a variety of airborne or ground-based systems.

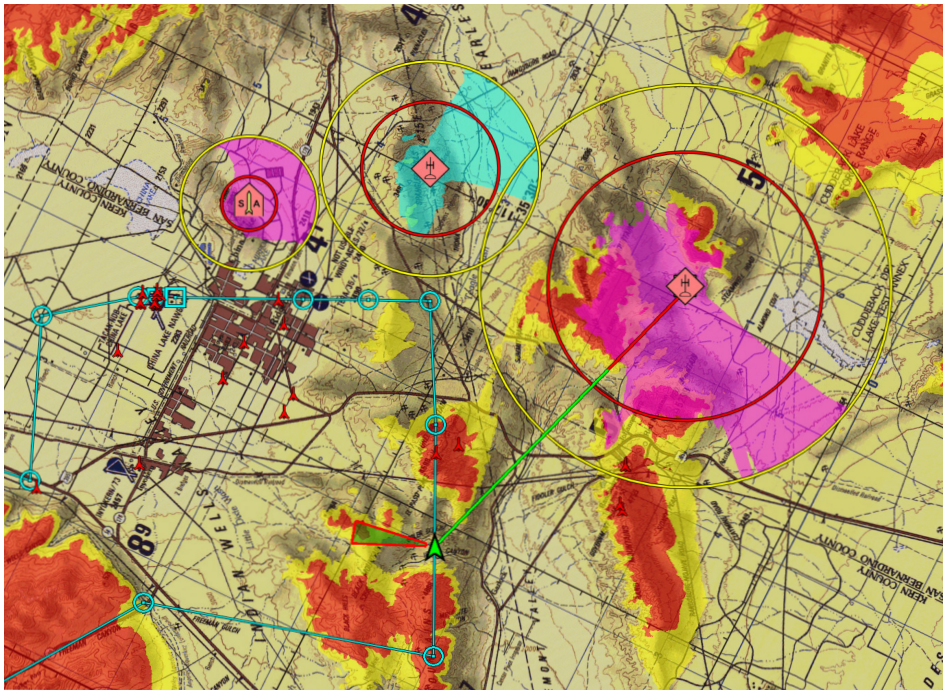
#### PROVEN SITUATIONAL AWARENESS

FliteScene supports standard OpenGL interfaces allowing for seamless integration with commercial off-the-shelf processors and graphic accelerators. This open-hardware approach provides a powerful digital map capability that can support any platform.

FliteScene's wide variety of features can be effectively applied to civilian-use applications, including law enforcement, fire, search and rescue, and any

commercial platform that can benefit from real-time digital mapping and situational awareness.

FliteScene is a continually evolving product, allowing it to grow and adapt to the changing needs of today's military and civilian agencies. FliteScene is widely fielded on rotary-and fixed-wing aircraft, providing years of operational experience for easy integration. It is highly portable and configurable to allow integration in even the most resource-limited systems.



2D chart view with height above threshold, routes, threat intervisibility, vertical obstruction and line-of-sight overlays.



#### FEATURES

- > Uses standard, non-proprietary, government and commercial map sources
- > Supports mission planning overlays in native formats
- > Open standard interfaces
- > Supports multiple real-time operating systems (RTOS) and central processing unit architectures
- > Supports desktop and mobile environments
- > Supports simulator and training devices
- > High performance 2D and 3D rendering
- > Minimal processing and memory requirements
- > Perpetual licensing with no recurring or subscription fees reduces lifecycle cost of the system
- > Exportable via U.S. Department of Commerce Export Administration Regulations

FliteScene supports open-standard and commercial data sources such as charts, elevation, imagery and approach plates. Symbol overlays such as height above threshold, routes, vertical obstructions, mission planning data, Keyhole Markup Language (KML)/ Keyhole Markup Zipped (KMZ), line-of-sight and sensor footprints provide enhanced situational awareness.

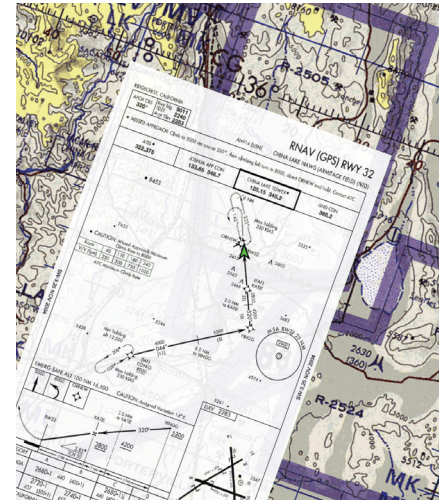
### ENVIRONMENT

- > Processor independent (32 and 64 bit)
- > OpenGL graphics SC 1.0.1, SC 2.0 and ES 2.0
- > Operating systems: VxWorks, VxWorks-653, INTEGRITY, INTEGRITY-178 tuMP, LynxOS-178b, Raspberry Pi, Linux, Windows, Android, iOS
- > Memory requirements: configurable at initialization; 128 MB system, 128 MB video suggested
- > Flexible API
- > Configurable file system
- > FACE conformant: general purpose profile
- > FACE aligned: safety base and safety extended profile
- > Multi-core with core affinity support
- > DO-178B DAL D
- > Configuration: XML Format

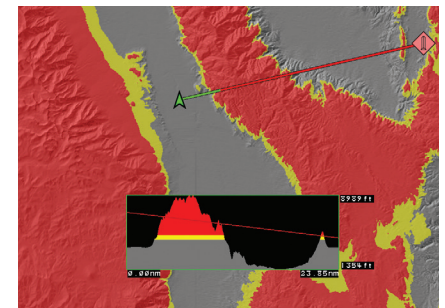
### MULTIPLE USERS

- > U.S. Army
  - AH-64D/E
  - CH-47F
  - UH-60L/M/V
- > ARSOC
  - MH-47G
  - MH-60M
  - AH/MH-6
- > AFSOC
  - MC-130J
- > U.S. Marine Corps
  - UH-1Y/AH-1Z
  - CH-53E/K
  - VH-60N
- > U.S. Navy
  - MH-60R/S
- > U.S. Coast Guard
  - MH-60T
  - MH-65E
  - HC-130H
  - HC-144A
- > U.S. Air Force
  - F-16C/D
  - HH-60W
  - A-10
  - U-2
- > Civilian platform
  - S-70i
- > International
  - CH-146 Griffon

To learn more visit: [L3Harris.com/flitescene](https://L3Harris.com/flitescene)



Geo-registered flight information publication (FLIP) overlay on map chart with transparency



Height above threshold with line-of-sight and elevation profile

### FliteScene

© 2024 L3Harris Technologies, Inc. | 05/2024 | L25753

Non-Export Controlled Information. These item(s)/data have been reviewed in accordance with the International Traffic in Arms Regulations (ITAR), 22 CFR part 120.34 and the Export Administration Regulations S (EAR), 15 CFR 734(3)(b)(3), and may be released without export restrictions.

L3Harris Technologies is the Trusted Disruptor in the defense industry. With customers' mission-critical needs always in mind, our ~50,000 employees deliver end-to-end technology solutions connecting the space, air, land, sea and cyber domains in the interest of national security.



1025 W. NASA Boulevard  
Melbourne, FL 32919

[L3Harris.com](https://L3Harris.com)