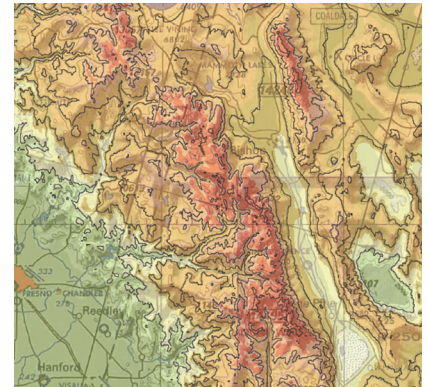


FLITESCENE® DIGITAL MAP SOLUTION

Combat-proven moving map for advanced situational awareness

FEATURE	VERSION INTRODUCED
ENVIRONMENT	
OpenGL SC 1.0	1.0.0
OpenGL ES 2.0	2.8.0
Core affinity	2.8.0
DO-178B DAL D	2.9.0
64-bit support	2.7.3
Desktop operating systems	1.0.0
RTOS environments	1.0.0
ARINC-653 RTOS environments	2.7.0
Mobile environments	2.7.0
DISPLAY FEATURES	
Multi-channel	2.3.0
Slew/decenter/zoom	1.0.0
Color modulation	2.1.0
DATA FRAME	
Bitmap/JPEG	1.0.0
JPEG2000/TIFF/PDF	2.2.0
PNG	2.6.0
UNDERLAYS	
Multiple layers	2.2.0
CADRG	1.0.0
ECRG	2.7.0
CIB	1.0.0
GeoTIFF	2.2.0
MrSID	2.12.0
GRG	2.16.0
Map coverage	2.19.0
Georegistered image overlays	1.0.0
ELEVATION & BATHYMETRIC SOURCE	
DTED (level 0, 1, 2)	2.1.0
RDTED (750m, 150m, 37.5m)	2.1.0
DBDB-V (2', 1', 0.5', 0.1', 0.05')	2.7.0
HRTE (level 3, 4, 5)	2.9.0

FEATURE	VERSION INTRODUCED
ELEVATION OVERLAYS	
Slope shading	2.1.0
Contour lines	2.1.0
Elevation bands/HAT	2.7.0
Depth bands	2.9.0
Flight performance band	2.13.0
THREATS	
Area TIV pattern	1.0.0
Spoke TIV pattern	2.3.0
Inverse TIV pattern	2.18.0
Icon or MIL-STD-2525 symbol	2.2.0
Mission planning files	2.2.0
MISSION PLANNING OVERLAYS (JMPS/PFPS)	
Individual file declutter	2.7.3
Dynamic file loading	2.7.3
Dynamic symbol creation	2.20.0
Export modified mission files	2.20.0
MCHUM	2.2.0
Local points	2.2.0
Drawing files	2.2.0
ROUTES	
Waypoints, legs, corridors	2.2.0
Serpentine legs	2.4.0
Speed/altitude gates	2.4.0
3D skyway	2.9.0
3D conformal route	2.15.0
Route files msnx	2.15
Route files crd	2.20.0
LINE OF SIGHT SYMBOLS	
Range/bearing	2.2.0
CLOS and POI	2.2.0
Elevation profile	2.3.0



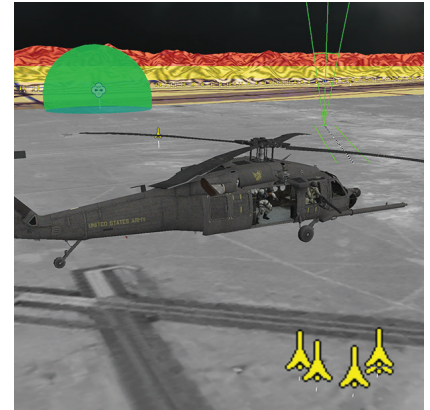
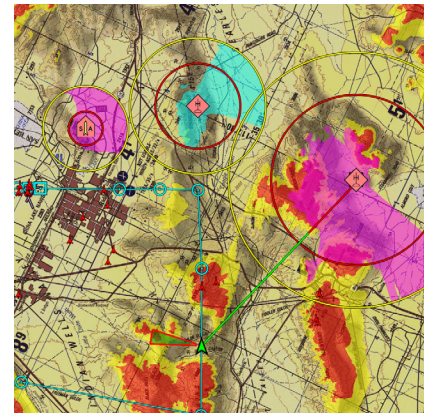
FliteScene provides advanced situational awareness for the most demanding conditions faced by military and civilian flight crews. The wide range of features and flexible configuration provided by FliteScene allows the digital mapping system to support a variety of mission needs for all types of aircraft.

FliteScene is continuously evolving with new features being added regularly. Once a feature is added, it will continue to be available in future releases. It maintains backward compatibility to allow seamless upgrades to the latest version.

FliteScene is developed with a DevSecOps model to continually improve the product while minimizing defects.

FEATURE	VERSION INTRODUCED
SYMBOL OVERLAYS	
VO points - DVOF	2.2.0
VO points - TFADS-O	2.10.0
VO lines - TFADS-O	2.20.0
ECHUM	2.2.0
MIL-STD-2525B tactical symbols	2.2.0
MIL-STD-2525C tactical symbols	2.6.0
MIL-STD-2525C tactical graphics	2.11.0
MIL-STD-2525D tacticals	2.18.0
ARINC 424	2.3.0
DAFIF	2.4.0
Airfield foundation data	2.9.0
Generic shape files	2.9.0
Range rings	2.12.0
Stormscope	2.14.0
Custom symbols and graphics	2.2.0
Screen & geo referenced	2.2.0
Lines, polygons & arcs	2.2.0
Text	2.2.0
Image symbols	2.2.0
Geo symbol off screen indicator	2.13.0
Text box	2.4.0
Configurable fonts (TTF)	2.12.0
Extended ASCII character set	2.13.0
Search areas/patterns	2.4.0
Landing zone	2.8.0
3D VIEWS	
Cockpit view	2.1.0
Wingman view	2.2.0
Sensor view	2.8.0

FEATURE	VERSION INTRODUCED
VEHICLE SYMBOLS	
Trend dots	2.1.0
Multiple vehicle tracking	2.2.0
Icon or MIL-STD-2525 symbol	2.4.0
Ownship visibility pattern	2.3.0
Inverse ownship visibility pattern	2.19.0
Compass rose	2.4.0
Vehicle-off-screen indicator	2.4.0
Vehicle history display and log	2.9.0
Configurable 3D vehicle model	2.9.0
SENSOR SYMBOL OVERLAYS	
Multiple sensors per vehicle	2.9.0
Sensor POI	2.9.0
Sensor footprint	2.9.0
Embedded image in footprint	2.9.0
WESCAM MX sensor plugin	2.20.0
CURSOR	
Hook cursor	2.2.0
Metadata support	2.4.0
3D support	2.8.0
DATA REQUESTS	
CLOS and POI request	2.1.0
Screen/position conversion	2.1.0
Elevation requests	2.1.0
Max elevation in area	2.19.0
Range/bearing request	2.7.0
MGRS conversion	2.9.0
DMS conversion	2.13.0
Screen capture	2.9.0



These FliteScene features are applicable to rotary wing, turbo prop, tactical fix wing, attack aircraft, cargo, ground vehicles, utility, intelligence, surveillance and reconnaissance, C5I, search and rescue, public safety, mission planning, and more.

To learn more about how L3Harris Technologies is supporting FliteScene, please visit: L3Harris.com/FliteScene

FliteScene Features

© 2024 L3Harris Technologies, Inc. | 06/2024 | L25748

Non-Export Controlled Information. These item(s)/data have been reviewed in accordance with the International Traffic in Arms Regulations (ITAR), 22 CFR part 120.34 and the Export Administration Regulations S (EAR), 15 CFR 734(3)(b)(3), and may be released without export restrictions.

L3Harris Technologies is the Trusted Disruptor in the defense industry. With customers' mission-critical needs always in mind, our ~50,000 employees deliver end-to-end technology solutions connecting the space, air, land, sea and cyber domains in the interest of national security.



1025 W. NASA Boulevard
Melbourne, FL 32919

L3Harris.com